

# ROOTWELL

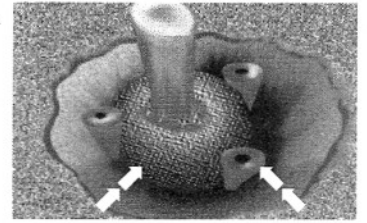
## Models, Installation Recommendations, & Design Drawing Details



### PRO

3 1/4" diameter by 18" long

Install at the time of new tree planting and with transplant trees. Space units evenly around the root ball at the outer edge of the planting pit. For best results install a second set of units located 12" outside of the original dug hole, spaced 2' to 3' apart.



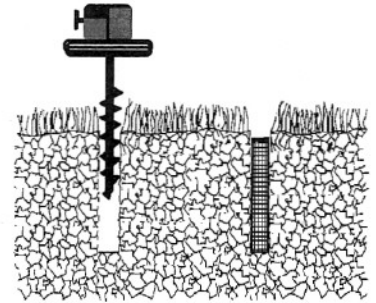
PLACE  
ROOTWELLS  
EVENLY AROUND  
THE BALL

PLACE ROOTWELL  
OXYGENATOR IN THE  
GROUND SO THE TOP  
IS EVEN WITH THE  
GROUND SURFACE

### STANDARD

2" diameter by 18" or 12" long

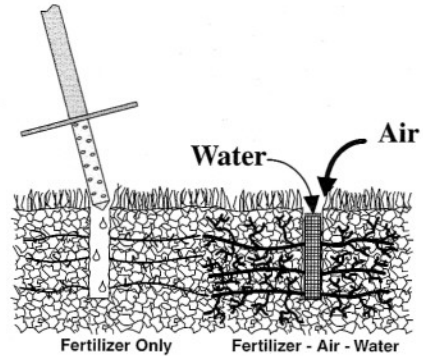
Recommended for maintaining existing trees and restoring health to trees in decline/stress. Install by coring holes to the desired depth with the use of an auger. Located units just inside the drip line/leaf canopy spaced 2' to 3' apart. For trees in severe decline install a second set of units half way between the trunk and drip line.



### TREE STICK

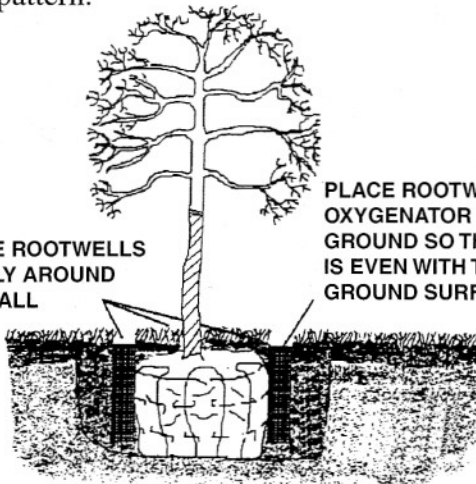
5/8" diameter by 10" long

Sized to fit the hole opening created by fertilizing probes or a drill bit. Include oxygen and water with your fertilizer treatments. Install in locations consistent with your normal fertilizing pattern.



PLACE ROOTWELLS  
EVENLY AROUND  
THE BALL

PLACE ROOTWELL  
OXYGENATOR IN THE  
GROUND SO THE TOP  
IS EVEN WITH THE  
GROUND SURFACE



## New Tree Planting Drawing Detail